

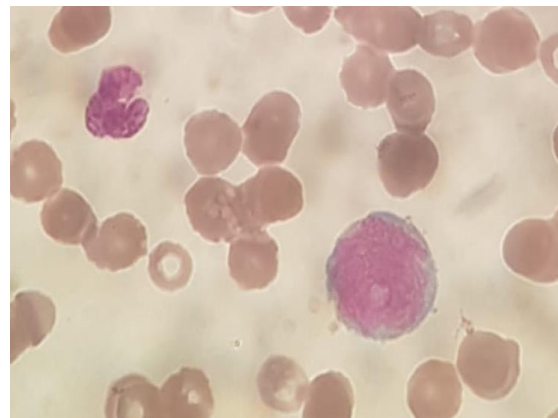
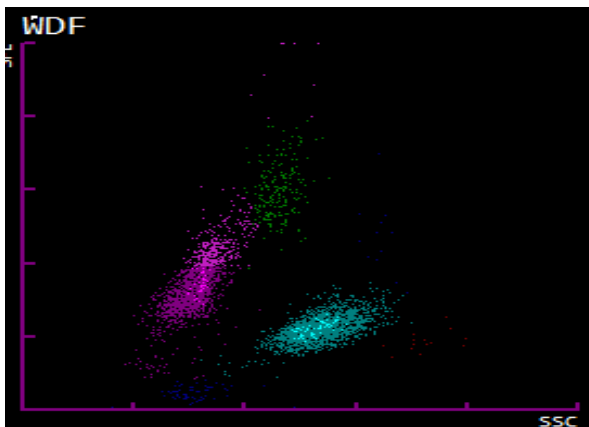
***JOURNAL OF BIOLOGICAL REGULATORS***



***DIAGNOSI EMOMETRICA DI LABORATORIO IN UN CASO DI  
MIELODISPLASIA: IL RUOLO DEL LABORATORIO***

***WBC : 4.030/ $\mu$ L HGB :9.0 g/L PLT :117.000  $\mu$ L MCV: 96 fL***

***NE-SSC :136 N :54 L :40 M :6 NE-SSC 136***



***In this edition: THE MITOCHONDRIAL ACTIVITY; VITAMIN D;  
YELLOW PROTEINS; GASTROESOPHAGEAL REFLUX DISORDERS;  
LABORATORY DIAGNOSIS OF MDS (COVER)***